



9G9! \$

Multipurpose Color Ultrasound System



IMAGING SYSTEMS



ES9-30

Advanced Imaging System



Amazing image quality
3D/4D imaging
Versatile features and functions
Intuitive and fast workflow

- 18.8 inch high resolution LED monitor
- 10 inch touch screen
- 3D/4D imaging
- Trapezoidal imaging TView

- Full screen imaging
- B and CF simultaneous dual display mode
- CWD as standard configuration
- 500G hard disk, DVD-RW and 4 USB ports

Innovative RF platform

The revolutionary RF platform, removes the limitation on hardware pre-processing and demodulation of traditional ultrasound platform. This allows all radio frequency signal for computing and processing, which is approximately dozens of times of data size than current traditional ultrasound is using, with the advantage of retaining more information and getting more accurate RF raw data for post processing. It results in much better image quality in resolution and contrast. This platform also has higher frequency range which can support probe from 1-25MHz. The intuitive work flow and user interface make it easy of use. And continuous improvement is our commitment always.

VFusion- Spatial Compound Imaging

Spatial compound imaging on ESE-30 RF platform greatly improves contrast resolution and sharpens the edges.

VSpeckle - Speckle Reduction Imaging

Speckle reduction technology utilizes auto structure detection to eliminate noise artifact and smoothen tissue image.

Phase-inversion Harmonic Imaging

Phase inversion harmonic imaging greatly improves contrast to have better image clarity.

ATO - Auto Optimization

This feature automatically optimizes B mode image based on overall gray-scale to generate better tissue imaging. It also automatically adjusts PRF and baseline of pulse wave Doppler to fit display screen.

Auto Trace in PW/CW

Automatically trace pulse wave of Doppler to display measurement result both in freeze and real time mode.



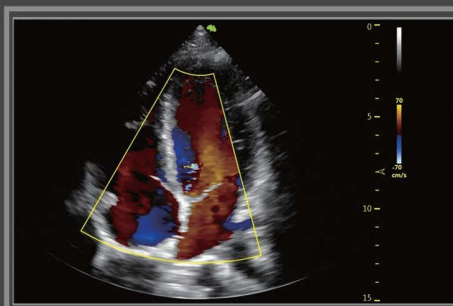
Clinic Value & Applications



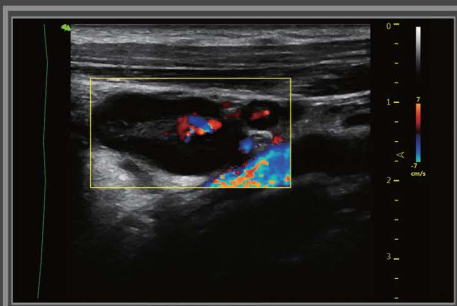
Pregnancy Yolk Sac Formation



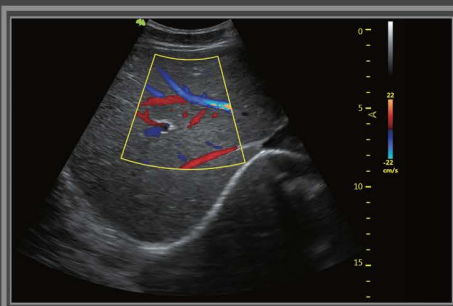
The Forearm Median Nerve



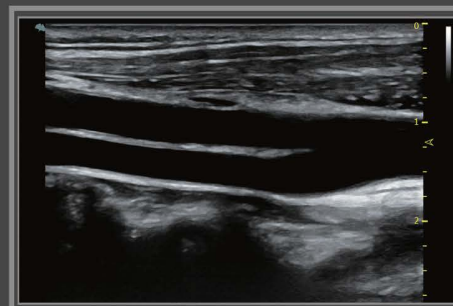
Apex Four Cavity Blood Flow



Blood Flow to the Lymph Nodes



Hepatic Vein Flow



Carotid Artery Branches



Sternun Beside the Left for Shaft



Fetal Face



Fetal Hand



Technical Features

Standard Main Unit

- Innovative RF platform
- 18.5 inch high resolution monitor
- 10 inch touch screen
- 500G Hard Disk
- DVD-RW and 4 USB Ports
- B/W video printer slot
- 4 easy access transducer ports (three active and one dummy)
- Pulse Wave Doppler & HPRF
- Color/Power/Directional Power Doppler Flow Imaging
- Phase-inversion/ Tissue Harmonic Imaging
- Vfusion (Spatial Compound Imaging)
- VSpeckle (Speckle Reduction Imaging)
- Tview (Trapezoid Imaging)
- VTissue
- Easy Compare
- RF-based Zoom
- Full Screen Imaging
- Triplex 2D/Color/PW
- Auto Optimization
- Auto trace in PW/CW
- B+CF simultaneously
- SGC(scanning gain compensation)
- Patient database
- Quick store
- Network storage and printing
- Vascular calculations
- Cardiac calculations
- OB calculations and tables
- Gynecological calculations
- Urological calculations
- Renal calculations

Standard Modules

- Smart 3D
- 4D Module
- CW
- Tissue Doppler
- Tomographic display (Mcut)

Optional Modules

- ECG
- Tissue Velocity Imaging (TVI)
- MAM (multi angle M mode, not available in Germany, France, Italy, Norway, USA, Japan)
- Color M mode (not available in USA, Canada, Australian, Europe,
- Tissue Velocity M-mode (TVM) (not available in USA, Canada, Australian, Europe, Japan)
- Auto IMT
- Pview
- Needle enhancement
- wireless connection package (need to be installed in the factory)
- Support Mobile data transmission via Bluetooth and E-Mail (such as 3D/4D baby face)
- Auto NT
- Inversion mode
- Magic cut
- Smart touch panel 3D/4D operation
- Free view
- DICOM export and storage
- DICOM printer
- DICOM worklist

Optional Transducers

F2-5C	128 element convex probe
G2-5C	128 element wideband convex probe
D3-6C	128 element wideband 3d/4D convex probe
D3-6CX	128 element wideband 3d/4D convex probe
G4-9E	128 element wideband endocavity probe
D4-9E	128 element wideband endocavity 3D/4D probe
G4-9M	128 element wideband micro convex probe
X4-12L	192 element Xcen technology wideband high frequencylinear probe
X6-16L	192 element Xcen technology wideband super highfrequency linear probe
U5-15LE	256 element Xcen technology wideband super highfrequency linear probe for breast application, 52mm footprint

F4-12L	128 element wideband high frequency linear probe
G1-4P	64 element phase array probe
S1-8C	Reusable stainless biopsy guide
S1-6P	Reusable stainless Biopsy guide
G1-4P	Reusable stainless Biopsy guide
G4-9E	Reusable stainless Biopsy guide
X4-12L	Reusable stainless Biopsy guide
X4-16L	Reusable stainless Biopsy guide
G2-5C	Reusable stainless Biopsy guide
	USB Single button foot switch
	USB Double button foot switch



ESSE3 srl, Via Garibaldi 30
14022 Castelnuovo D.B. (AT)
Tel +39 011 99 27 706
Fax +39 011 99 27 506
e-mail esse3@chierinet.it
web: www.esse3-medical.com

